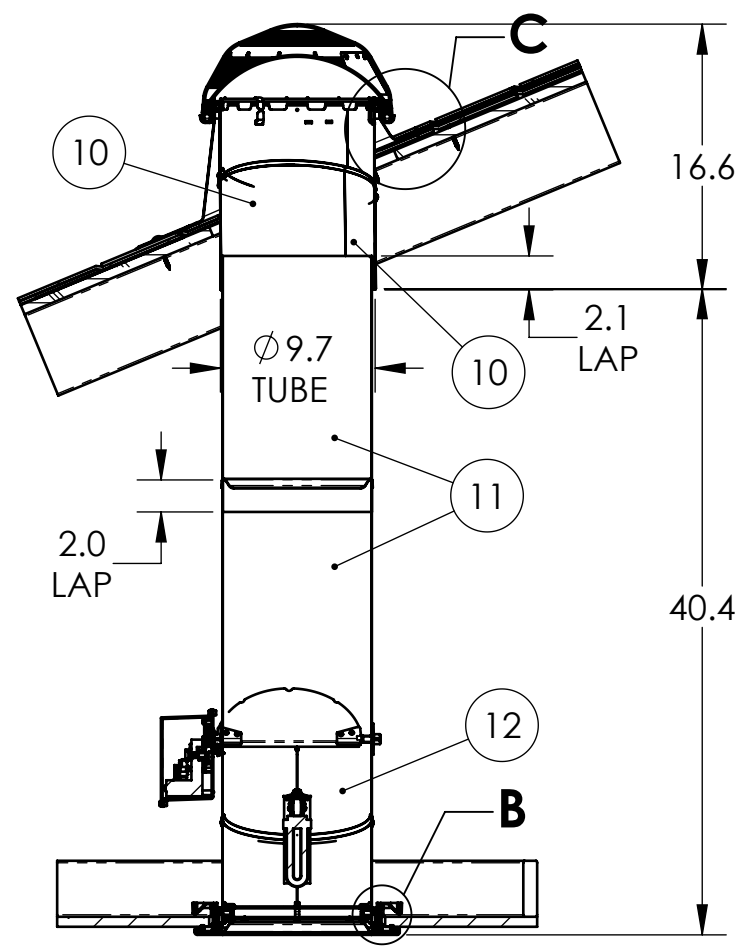
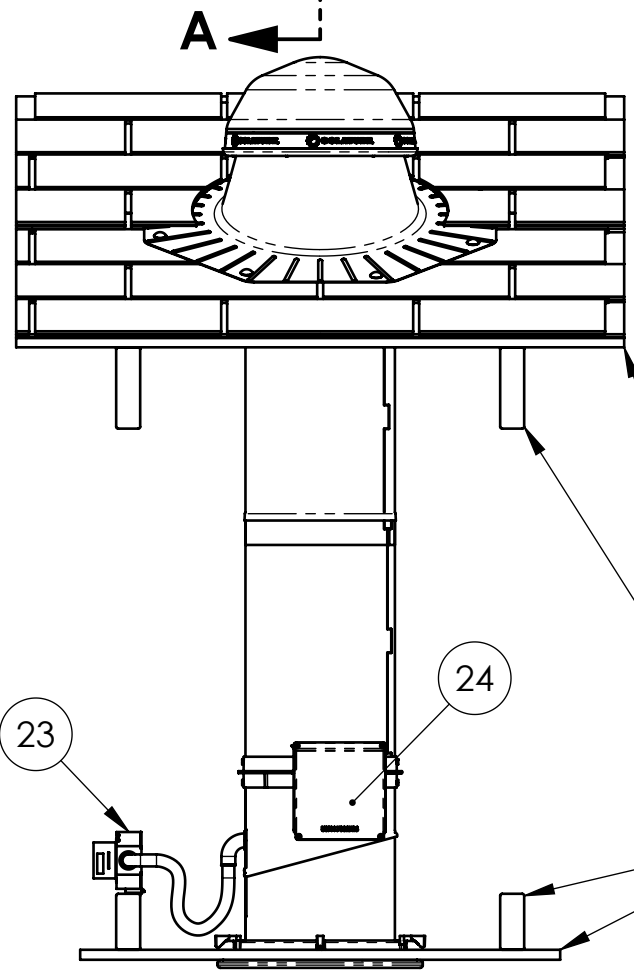
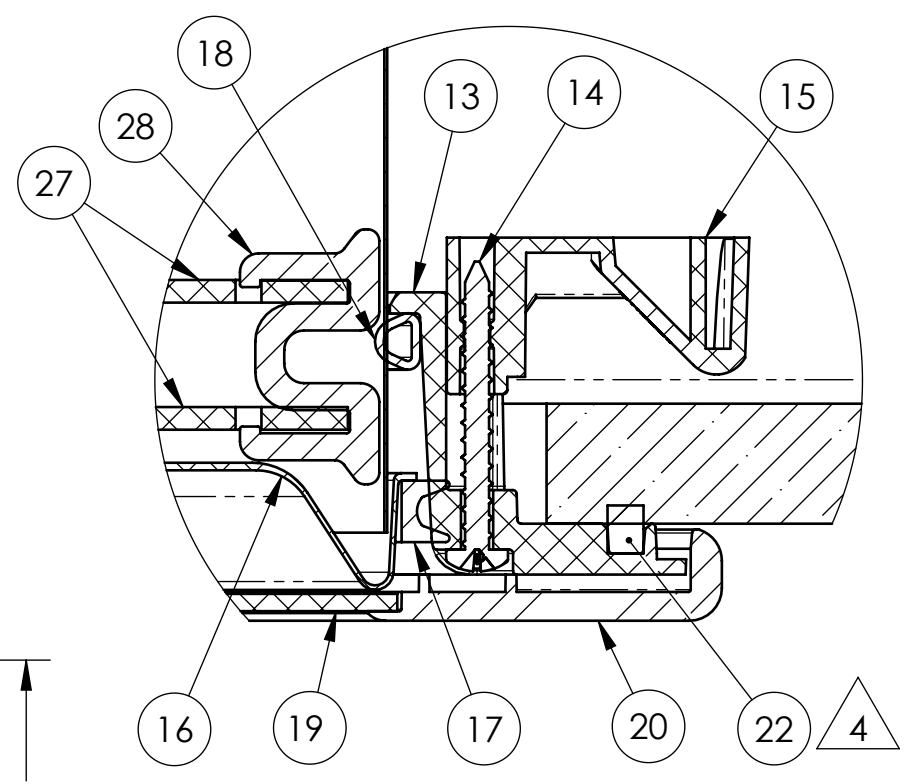


FLASHING SHOWN WITH OPTIONAL  
2"-48" TALL TURRET EXTENSION

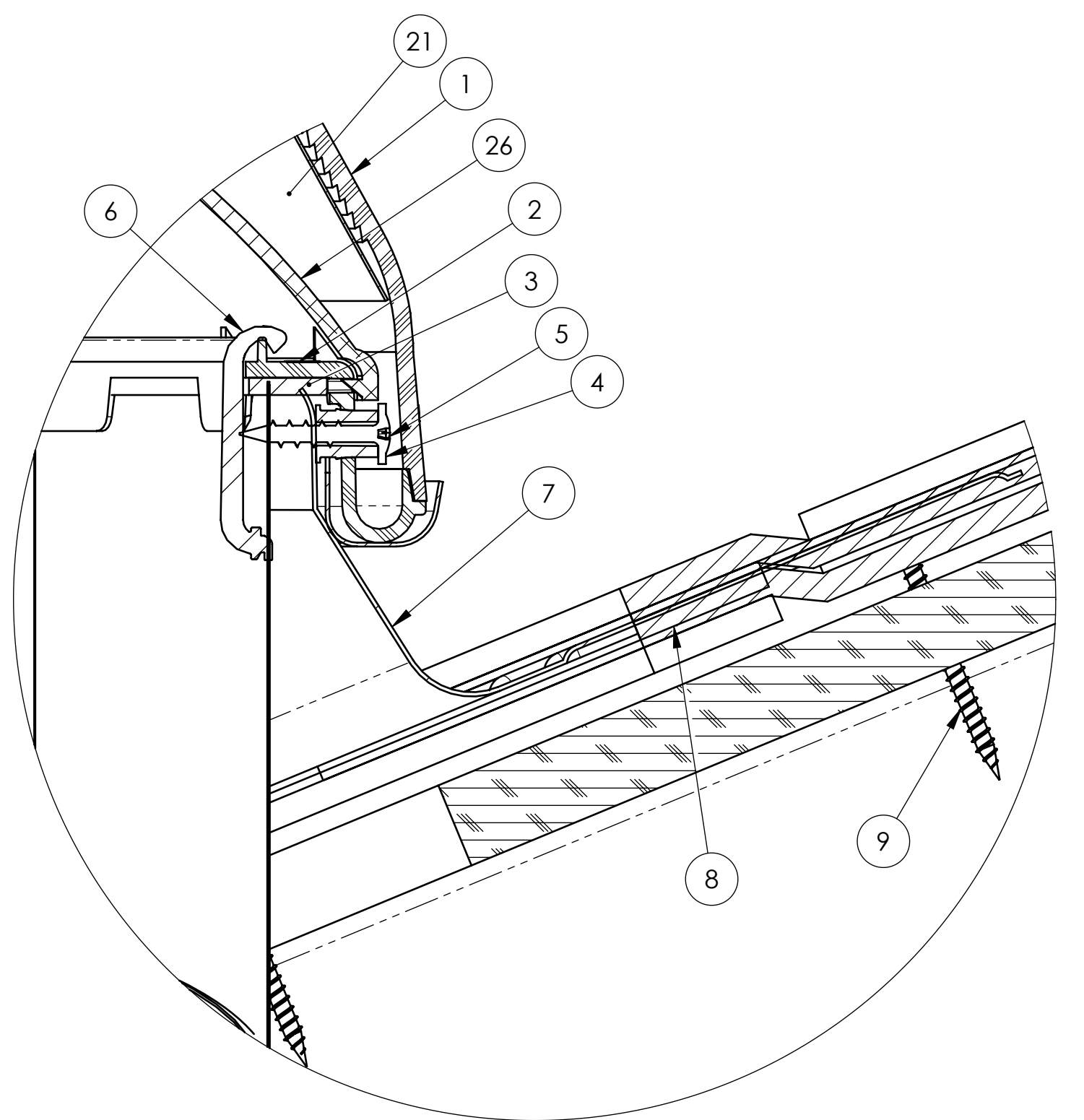


**SECTION A-A**



**DETAIL B  
SCALE 1 : 1**

- NOTES:
1. STRUCTURAL ELEMENTS (PLYWOOD, RAFTERS, DRYWALL ETC.) BY OTHERS & SHOWN FOR REFERENCE ONLY
  2. ALL TUBE JOINTS & SEAMS TAPED WITH 2" FOIL TAPE (NOT SHOWN)
  3. SEE PAGE 3 FOR ALTERNATE DIFFUSER CONFIGURATIONS
  4. ITEM #22; RECTANGULAR FOAM OR SEALANT BEAD




**DETAIL C  
SCALE 1 : 1**

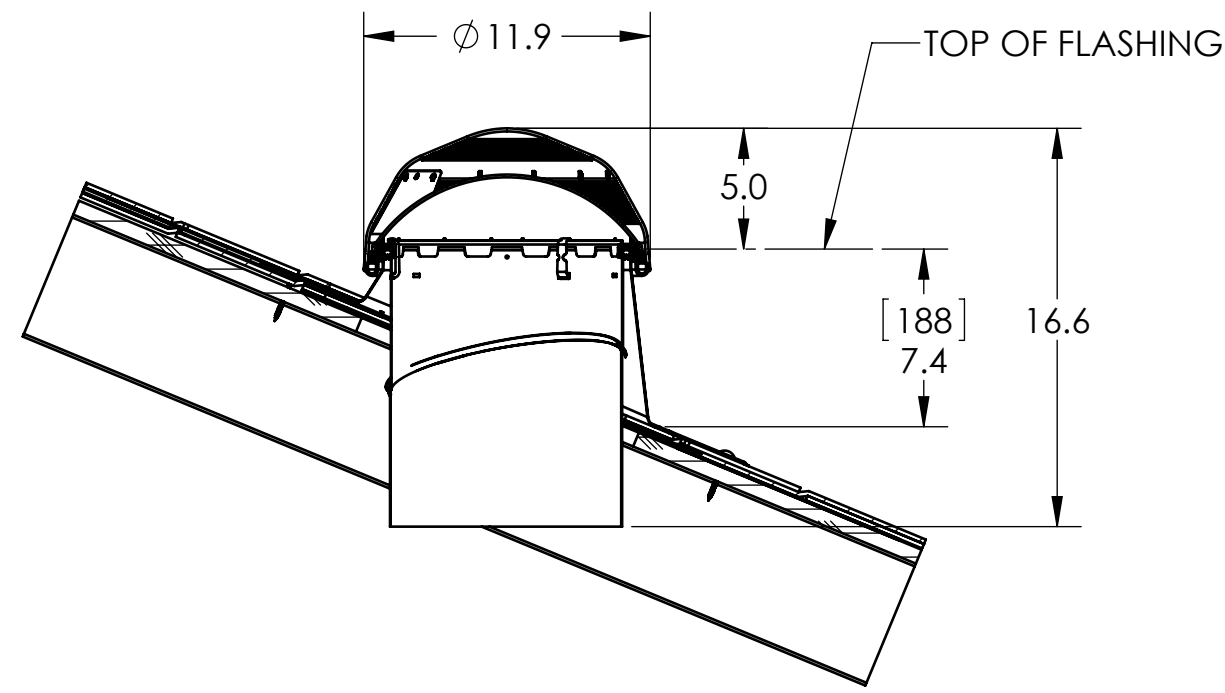
ITEM NO.	QTY.	PART NO.	DESCRIPTION	MATERIAL
1	1	410720	OUTER DOME 160 DS	PMMA
2	1	410650	DOME RING 160 DS	PMMA
3	1	600610	FOAM SEAL RECTANGULAR 1/8" X 9/16"	CLOSED CELL FOAM(VARIOUS)
4	4	410730	DOME RING SPACER	POLYAMIDE
5	4	700240	SCREW #8 X 1" MOD TR HD	STEEL
6	3	410750	TOP TUBE CLIP	PMMA
7	1	VARIES*	FLASHING	STEEL
8	1	700280/700300	SEALANT	URETHANE
9	8	700480	SCREW #10 X 2" SMS, MOD TRUS PHIL	STEEL
10	1	302230	TOP TUBE 160 DS	ALUMINUM LAMINATE
11	2	301800/301830	TUBE 16"/24" EXTENSION 160 DS	ALUMINUM LAMINATE
12	1	302110	BOTTOM TUBE 160 DS	ALUMINUM LAMINATE
13	1	410215	CEILING RING 160 DS	PMMA
14	4	700450	SCREW #8 X 1.5" SMS PHIL PAN AB THREAD	STEEL
15	4	410220	CLAMP	POLYAMIDE
16	1	421335	160 DS NATURAL EFFECT LENS	PET
17	1	600290	160 DS NATURAL EFFECT LENS SEAL	EPDM FOAM
18	1	600445	D SEAL HOLLOW	EPDM FOAM
19	1	410330/420060	DIFFUSER PANEL	PMMA, PC
20	1	410320	DRESS RING 160 DS	PMMA
21	1	300220	LIGHT TRACKER REFLECTOR 160 DS	ALUMINUM LAMINATE
22	1	600620	FOAM SEAL RECTANGULAR 3/16" X 1/4"	CLOSED CELL FOAM
	1	-	ALTERNATE (PROVIDED BY USER)	ACRYLIC SEALANT (VARIOUS)

OPTIONAL COMPONENTS				
ITEM NO.	QTY.	PART NO.	DESCRIPTION	MATERIAL
23	1	500030, 501100	LIGHT KIT (SBCFL, 4-PIN)	
24	1	570001	DAYLIGHT DIMMER 160 DS	
25	1	VARIES**	TURRET EXTENSION	STEEL
26	1	410710	160 DS DOME SHOCK INNER	PMMA
27	2	420250	160 DS INSULATION PANEL	PMMA
28	4	420270	INSULATION PANEL CLIP	PMMA

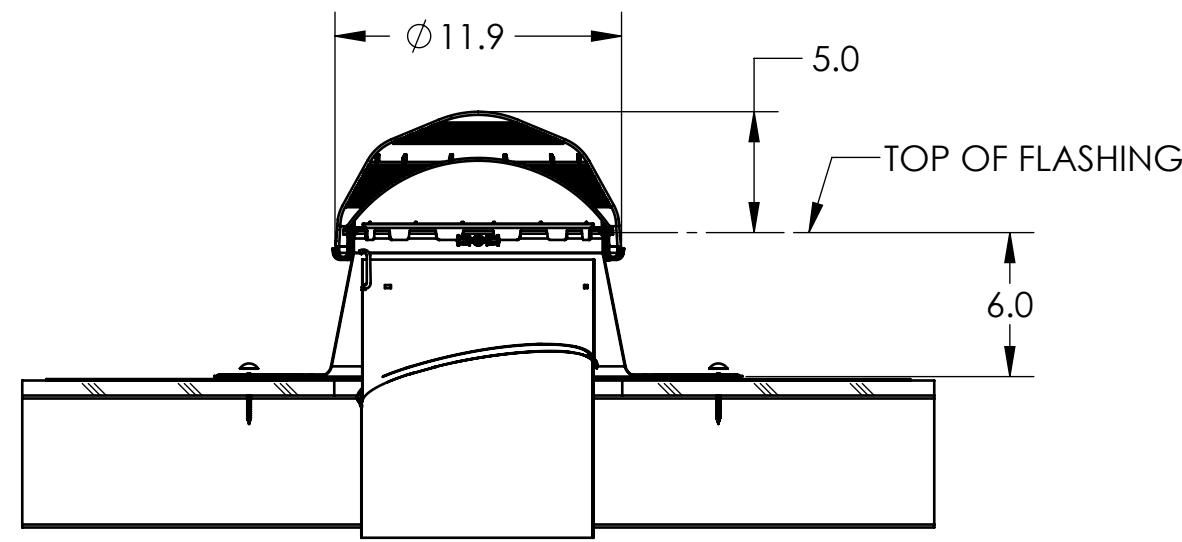
\* PN'S 200640, 230485, 200591, 230620  
\*\* PN'S 230450, 230750, 230500, 230510, 230520, 230530

<b>UNLESS OTHERWISE SPECIFIED:</b> TOLERANCES ANGULAR: ±0.5° INCH      MILLIMETER .X ± .1      [.X] ± 2.5 .XX ± .01    [.XX] ± .25 .XXX ± .005 [.XXX] ± .12	<b>PROPRIETARY AND CONFIDENTIAL</b> THE INFORMATION CONTAINED IN THIS DRAWING IS THE SOLE PROPERTY OF SOLATUBE. ANY REPRODUCTION IN PART OR AS A WHOLE WITHOUT THE WRITTEN PERMISSION OF SOLATUBE IS PROHIBITED.	 2210 OAK RIDGE WAY VISTA, CALIFORNIA 92081-8341 PH (760) 597-4400	
		<b>TITLE:</b> <b>160 DS (10") SOLATUBE ASSY          PITCHED FLASHING</b>	
MATERIAL -- FINISH --	DRAWN BY STEVENS	DATE 2/16/09	SIZE DWG. NO. <b>160-PF-HC-STD</b>
<b>DO NOT SCALE DRAWING</b>	CHECKED BY -- APPROVED BY --	DATE -- DATE --	
		SCALE: 1:12	SHEET 1 OF 7

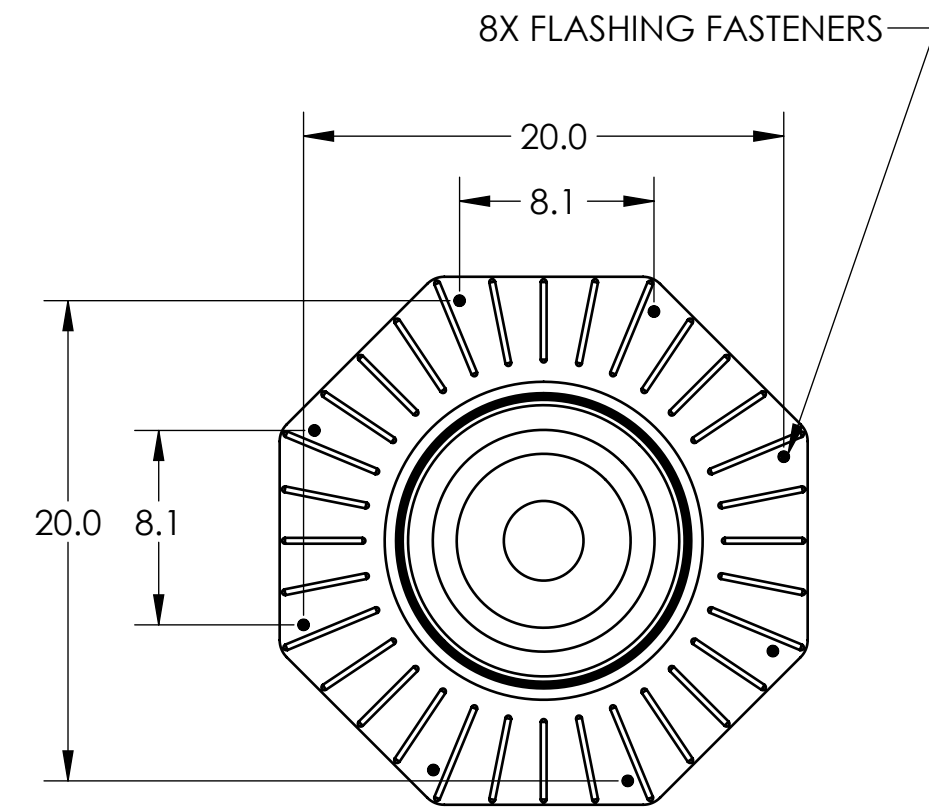
REVISIONS					
REV.	ECO	DATE	REVISED	CHECKED	APPROVED
-	-	See Sheet1	-	-	-



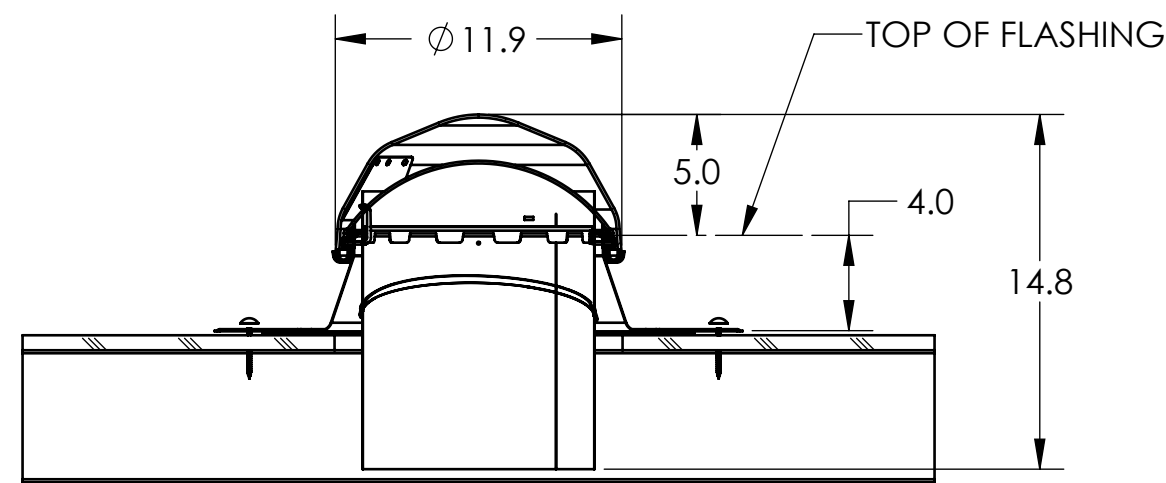
**PITCHED**



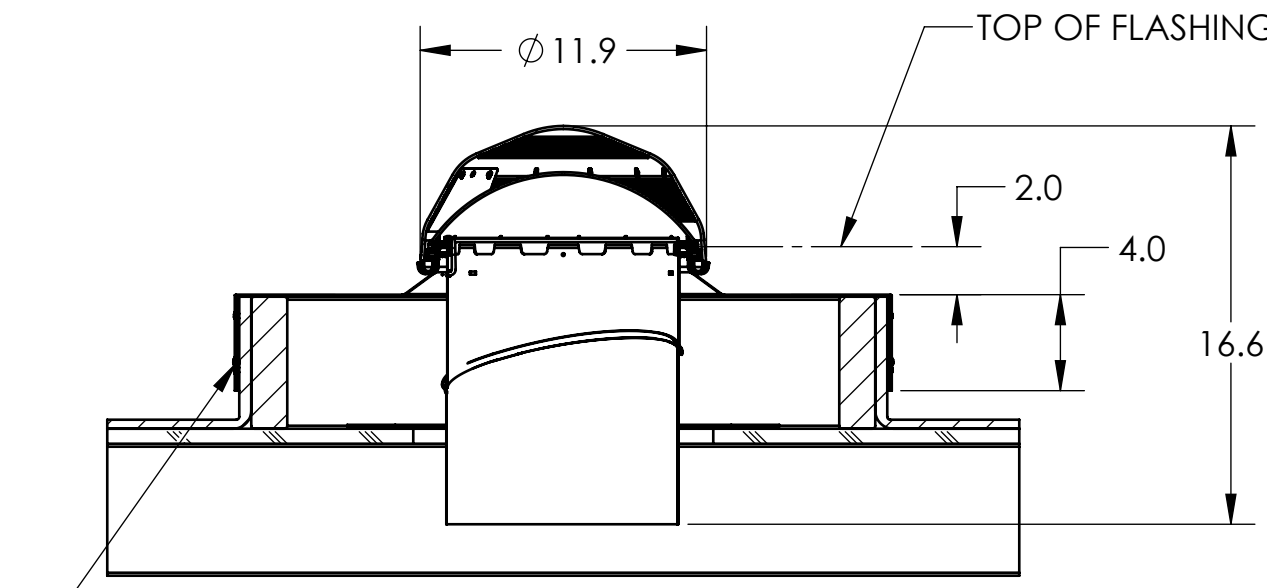
**FLAT 6"**



8X FLASHING FASTENERS  
FLASHING FASTENER SPACING  
FLAT 4", FLAT 6" & PITCHED



**FLAT 4"**



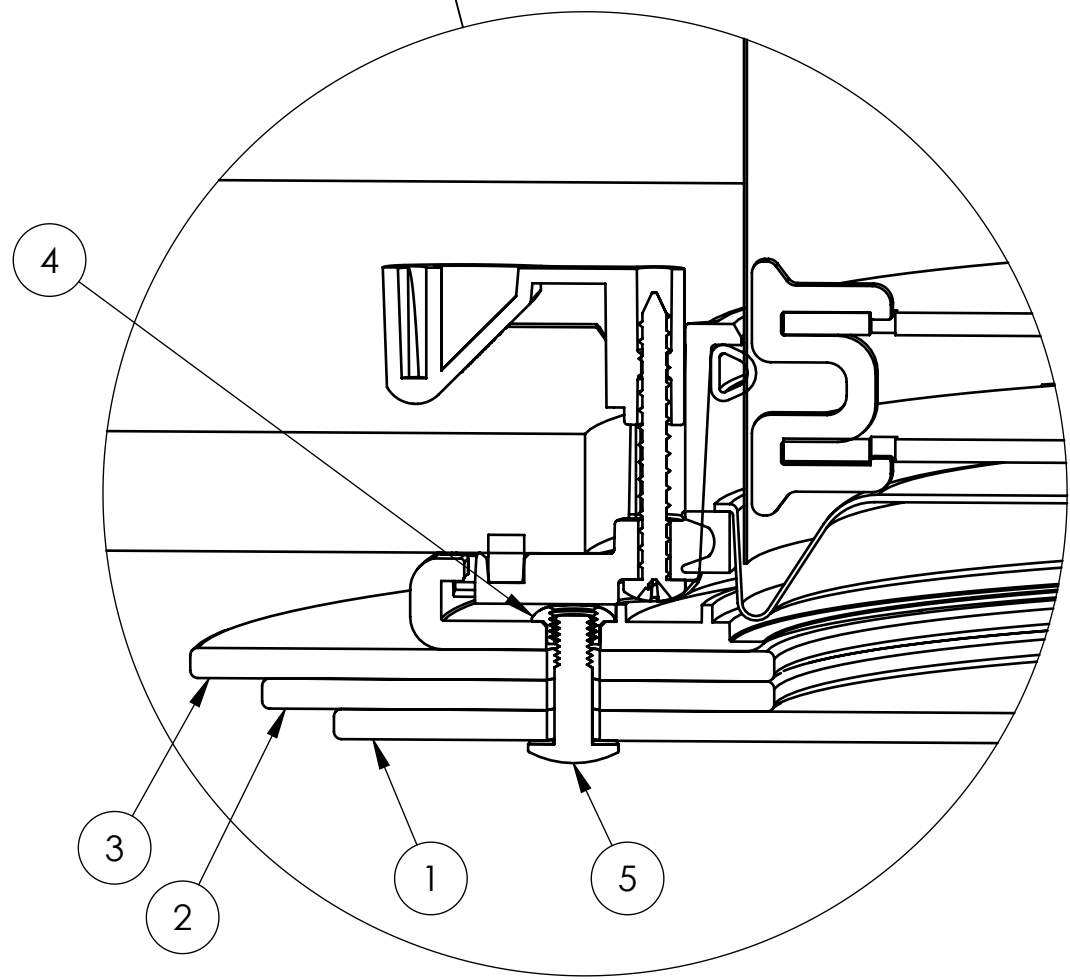
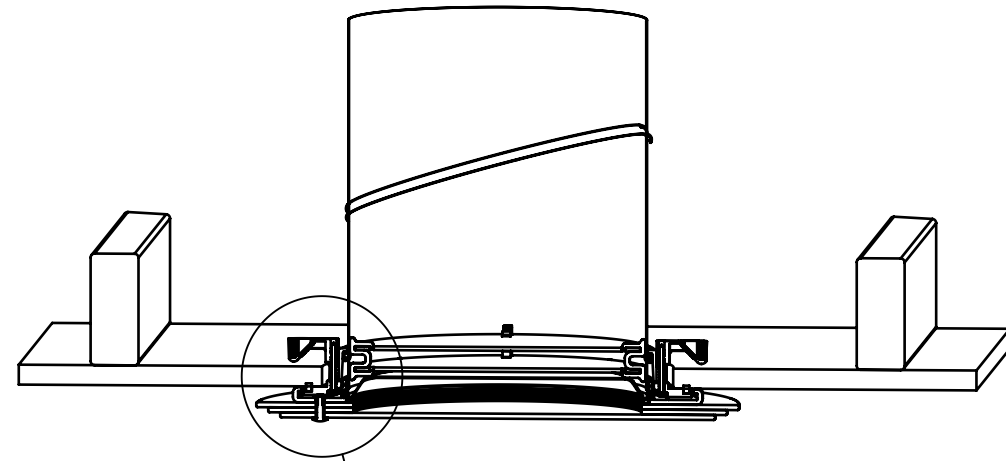
**CURB**

8X FLASHING FASTENERS,  
2X FASTENERS PER SIDE

# GLASS DISTRACTIONS FOR 160 DS SOLATUBE

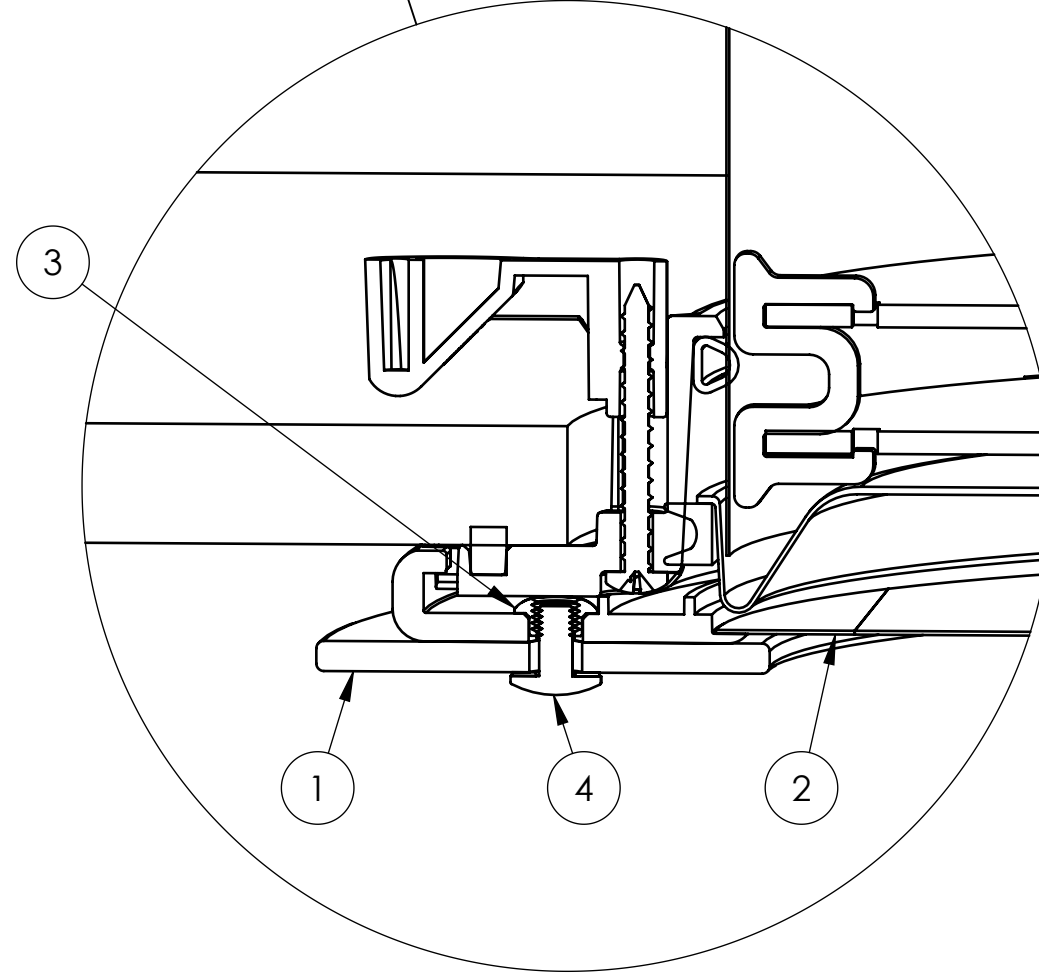
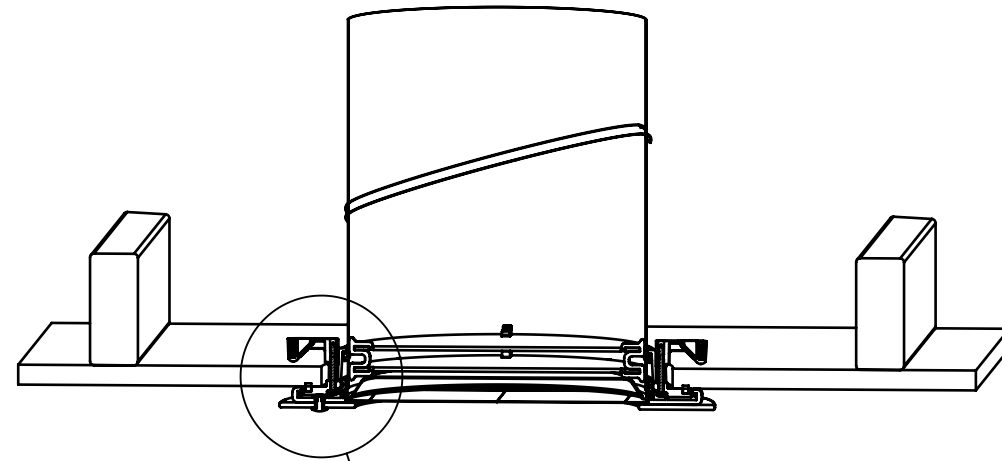
REVISIONS					
REV.	ECO	DATE	REVISED	CHECKED	APPROVED
-	-	See Sheet 1	-	-	-

**'TIER DROP' DIFFUSER ASSEMBLY**



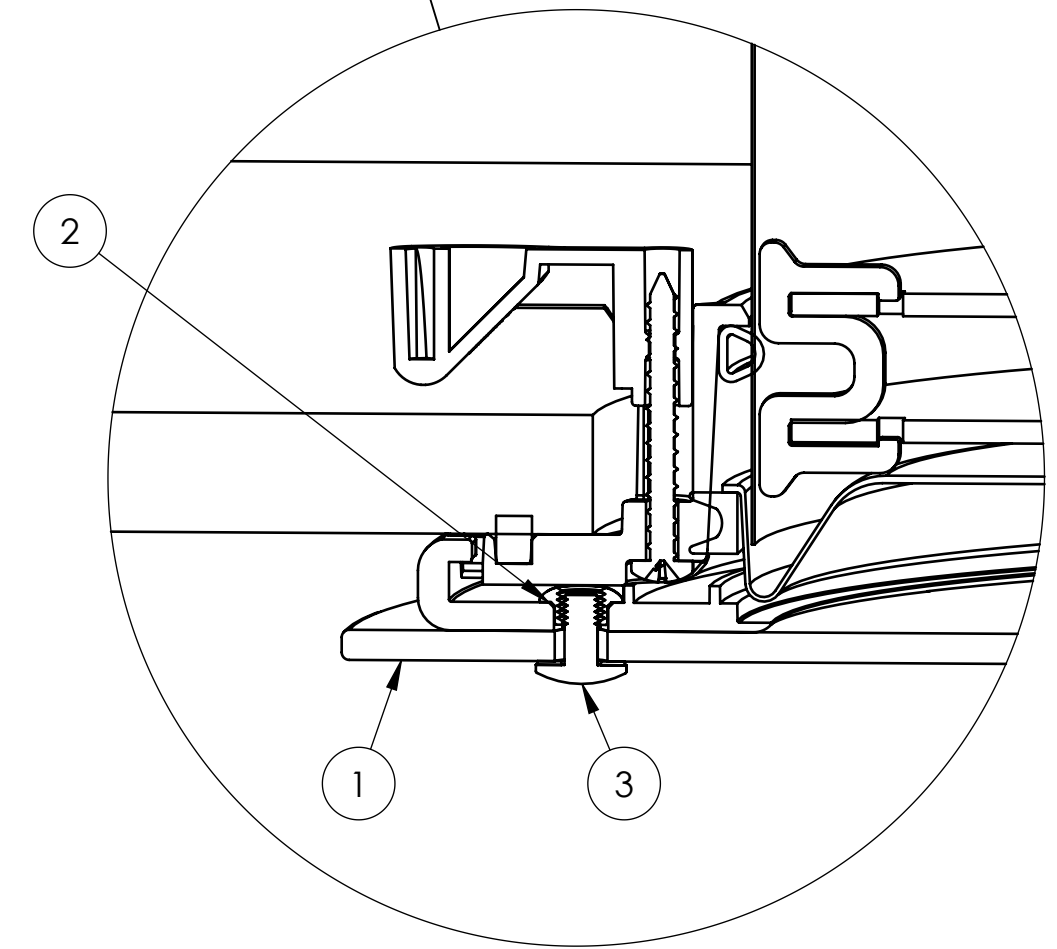
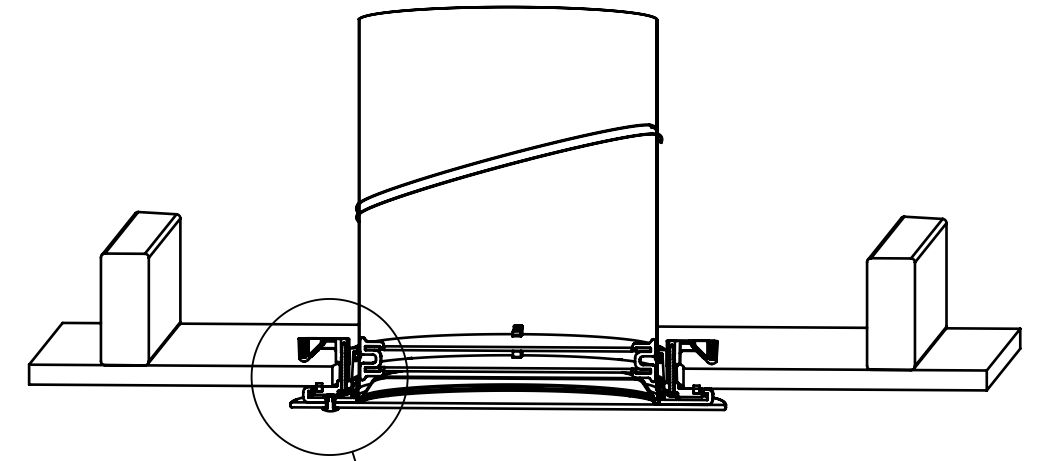
TIER DROP DIFFUSER ASSEMBLY COMPONENTS				
ITEM NO.	QTY.	PART NO.	DESCRIPTION	MATERIAL
1	1	400165	GLASS DISK 160 DS	TEMPERED GLASS
2	1	400166	MIDDLE GLASS RING 160 DS	TEMPERED GLASS
3	1	400167	TOP GLASS RING 160 DS	TEMPERED GLASS
4	3	700915	SPANNER NUT	STAINLESS STEEL
5	3	700925	SHOULDER SCREW M5	STAINLESS STEEL

**'OPTIVIEW' DIFFUSER ASSEMBLY**



OPTIVIEW DIFFUSER ASSEMBLY COMPONENTS				
ITEM NO.	QTY.	PART NO.	DESCRIPTION	MATERIAL
1	1	400160	GLASS DISK CENTER CLEAR 160	TEMPERED GLASS
2	1	420060	DIFFUSER 160 PANEL OPTIVIEW	PC
3	3	700915	SPANNER NUT	STAINLESS STEEL
4	3	700925	SHOULDER SCREW M5	STAINLESS STEEL

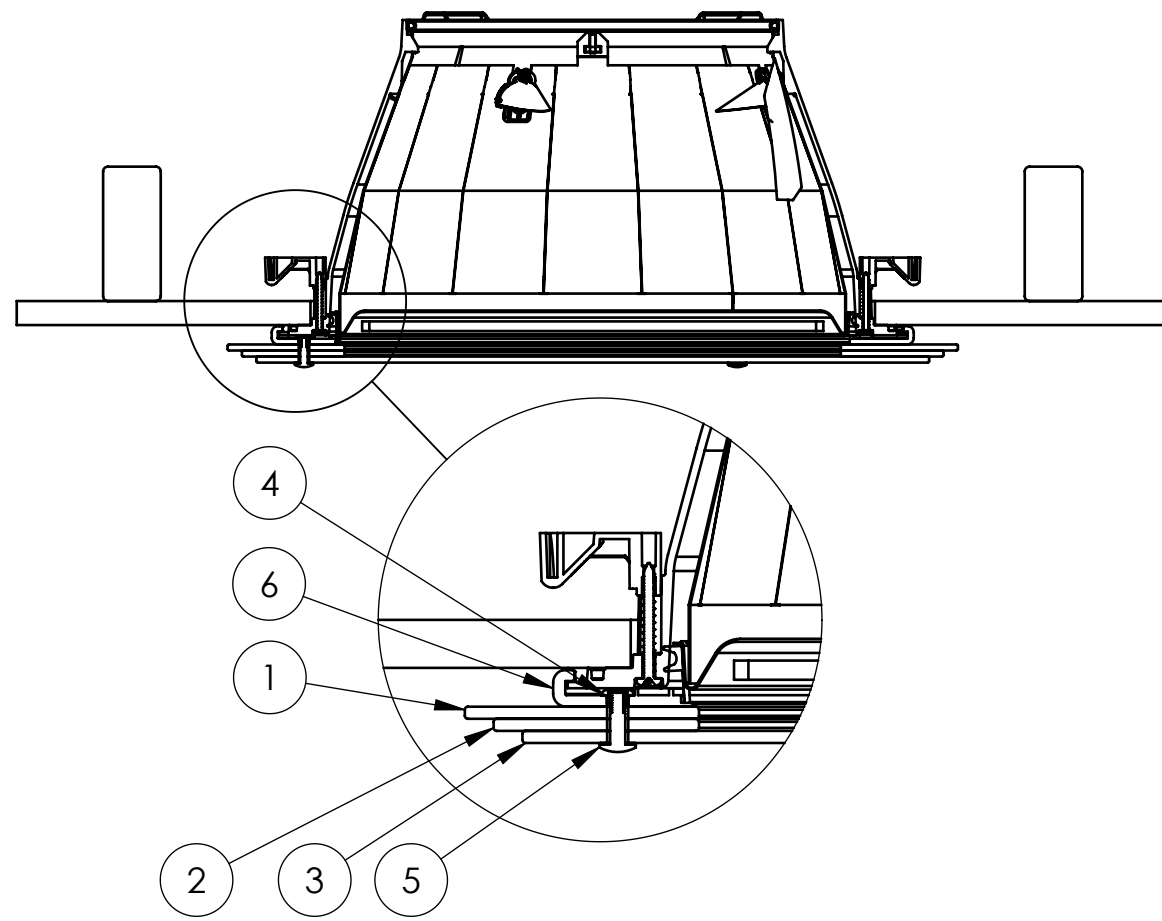
**'JUST FROST' DIFFUSER ASSEMBLY**



JUST FROST DIFFUSER ASSEMBLY COMPONENTS				
ITEM NO.	QTY.	PART NO.	DESCRIPTION	MATERIAL
1	1	400165	GLASS DISK 160 DS	TEMPERED GLASS
2	3	700915	SPANNER NUT	STAINLESS STEEL
3	3	700925	SHOULDER SCREW M5	STAINLESS STEEL

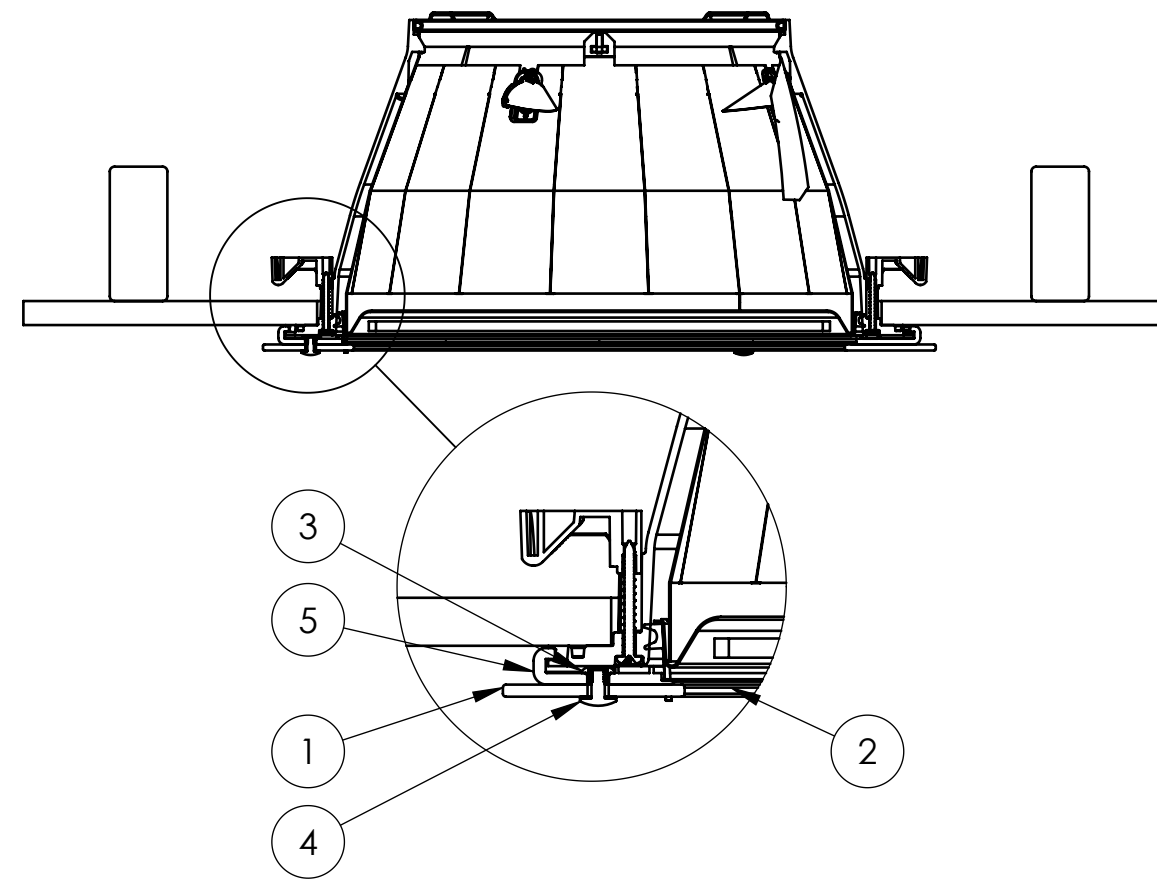
# SMART LED GLASS DISTRACTIONS FOR 160 DS SOLATUBE

### 'TIER DROP' DIFFUSER ASSEMBLY



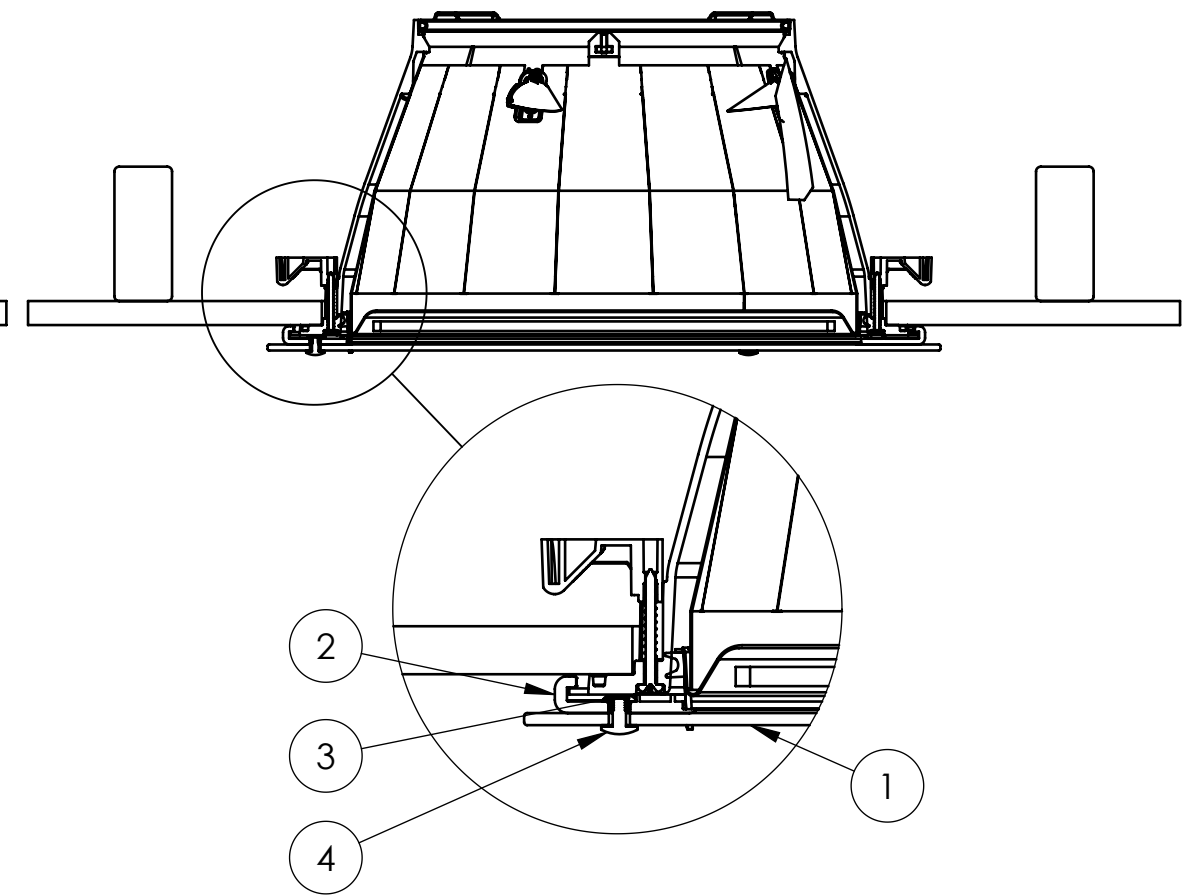
TIER DROP DIFFUSER ASSEMBLY COMPONENTS				
ITEM NO.	QTY.	PART NO.	DESCRIPTION	MATERIAL
1	1	400295	GLASS DISK 290 DS	TEMPERED GLASS
2	1	400296	MIDDLE GLASS RING 290 DS	TEMPERED GLASS
3	1	400297	TOP GLASS RING 290 DS	TEMPERED GLASS
4	3	700915	SPANNER NUT	STEEL
5	3	700925	SHOULDER SCREW M5	STEEL
6	1	410520	290 DS DRESS RING	ACRYLIC

### 'OPTIVIEW' DIFFUSER ASSEMBLY



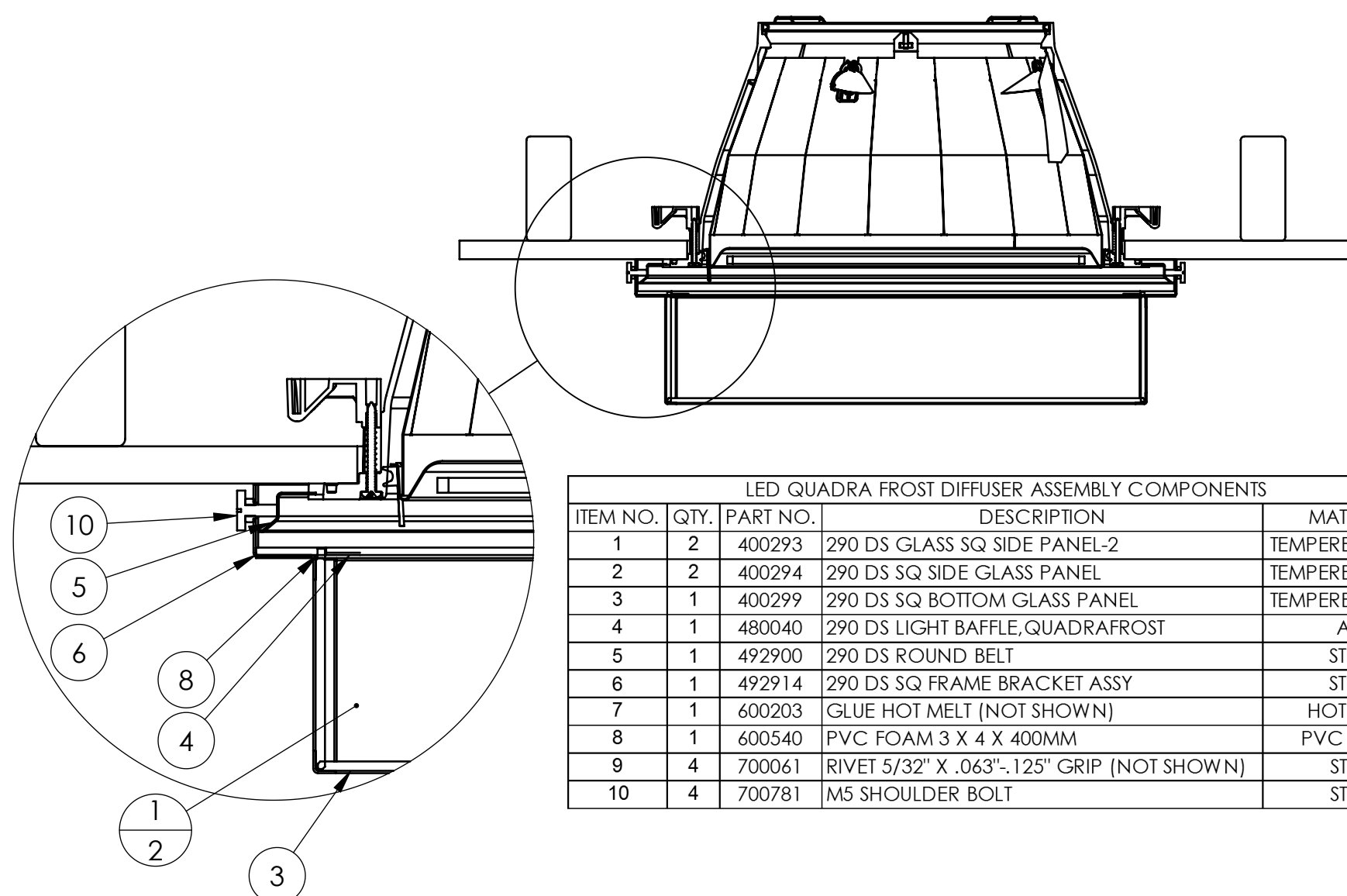
OPTIVIEW DIFFUSER ASSEMBLY COMPONENTS				
ITEM NO.	QTY.	PART NO.	DESCRIPTION	MATERIAL
1	1	400290	GLASS DISK CENTER CLEAR 290 DS	TEMPERED GLASS
2	1	420080	DIFFUSER 290 DS PANEL OPTIVIEW	PC
3	3	700915	SPANNER NUT	STEEL
4	3	700920	SHOULDER SCREW M5	STEEL
5	1	410520	290 DS DRESS RING	ACRYLIC

### 'JUST FROST' DIFFUSER ASSEMBLY



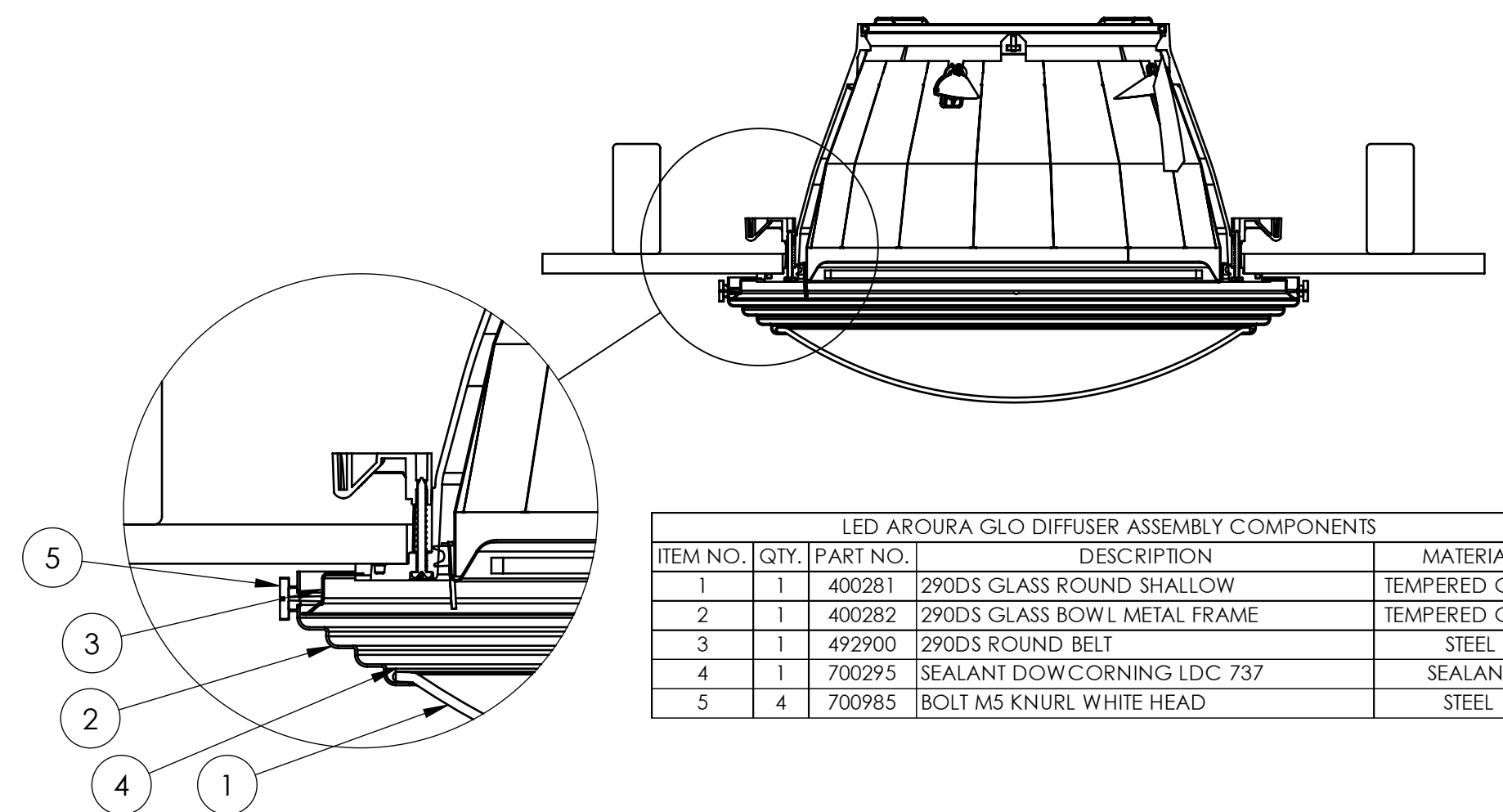
JUST FROST DIFFUSER ASSEMBLY COMPONENTS				
ITEM NO.	QTY.	PART NO.	DESCRIPTION	MATERIAL
1	1	400295	GLASS DISK 290 DS	TEMPERED GLASS
2	1	410520	DRESS RING 290 DS	ACRYLIC
3	3	700915	SPANNER NUT	STEEL
4	3	700925	SHOULDER SCREW M5	STEEL

### 'QUARDA FROST' DIFFUSER ASSEMBLY



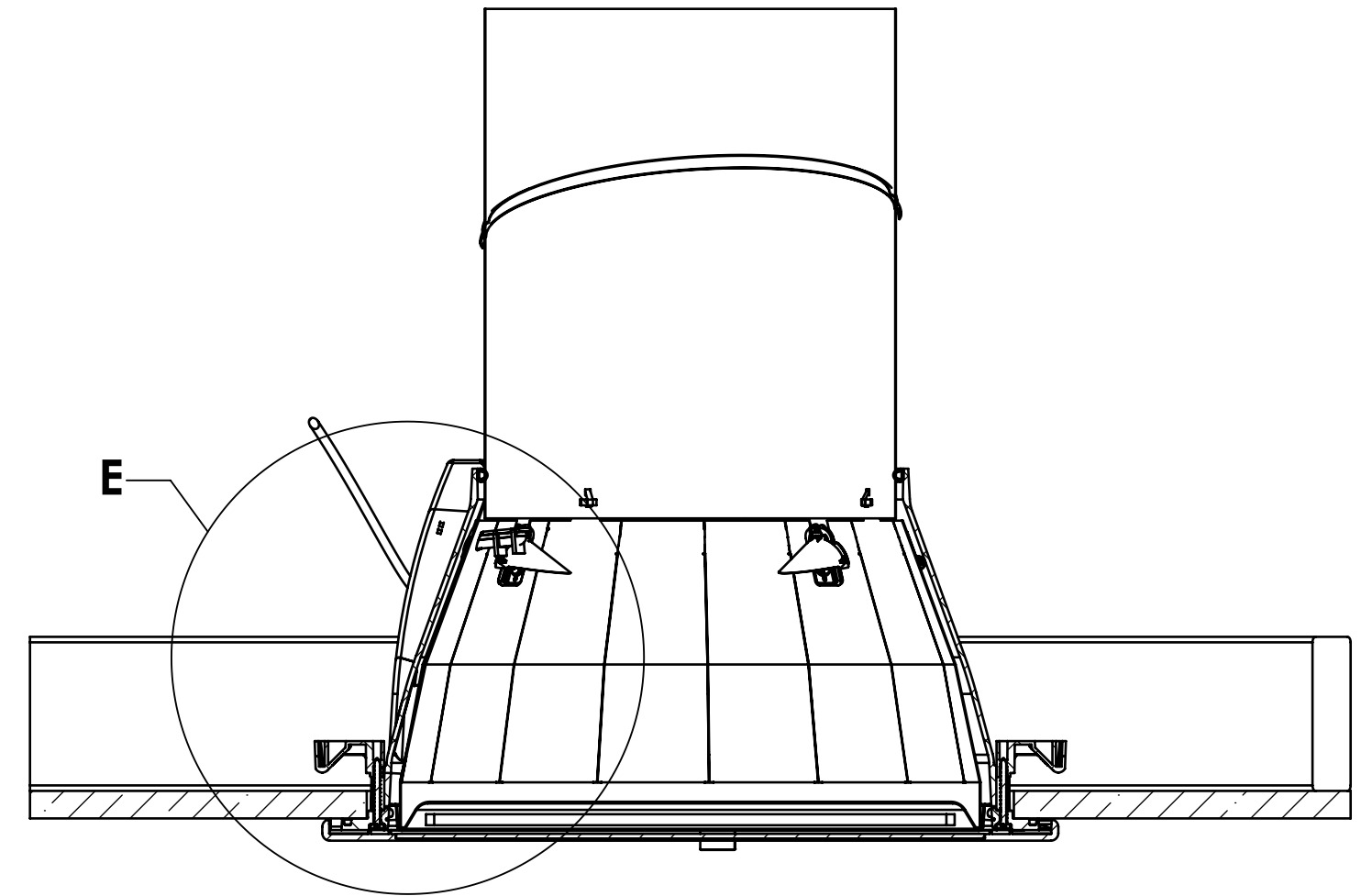
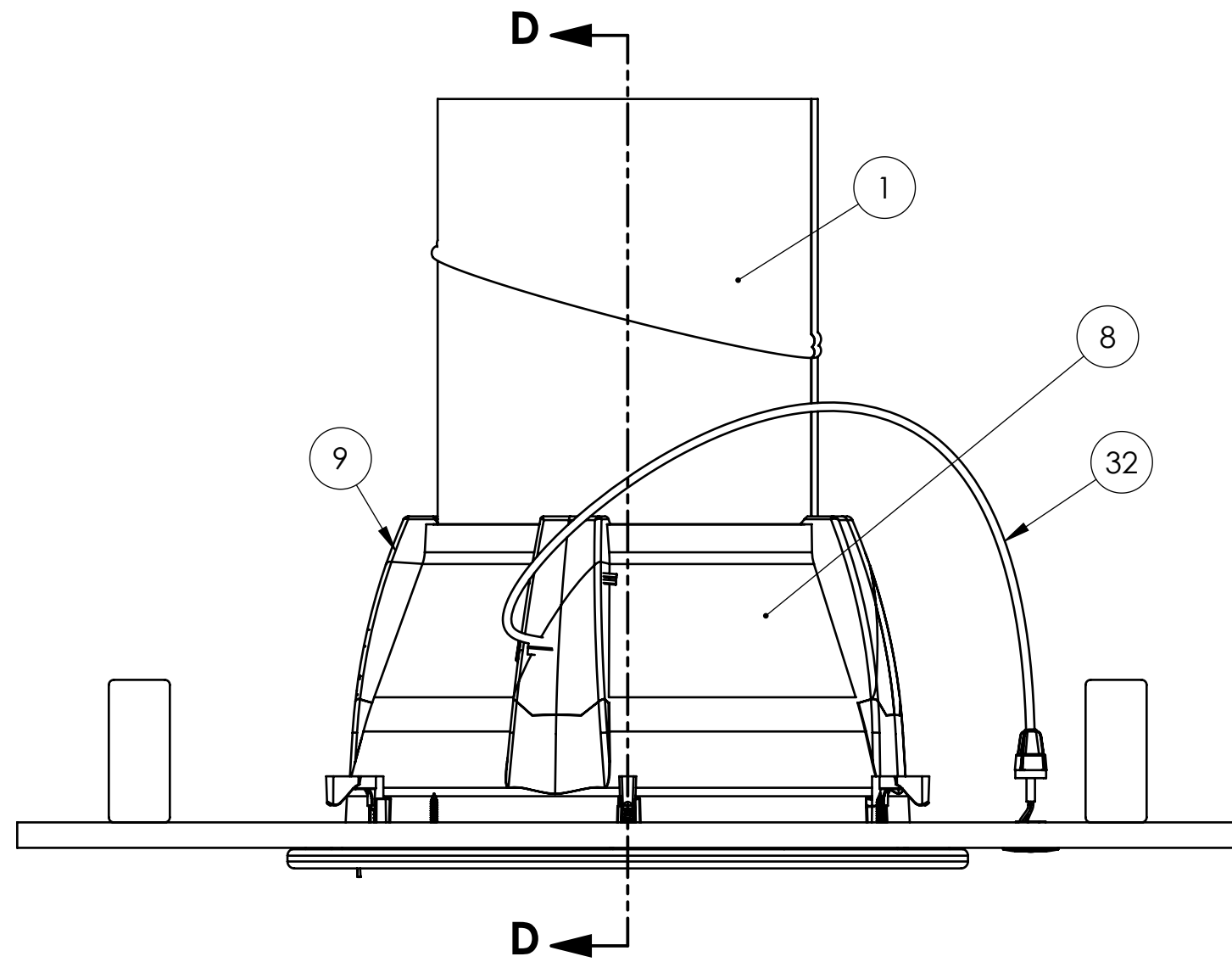
LED QUADRA FROST DIFFUSER ASSEMBLY COMPONENTS				
ITEM NO.	QTY.	PART NO.	DESCRIPTION	MATERIAL
1	2	400293	290 DS GLASS SQ SIDE PANEL-2	TEMPERED GLASS
2	2	400294	290 DS SQ SIDE GLASS PANEL	TEMPERED GLASS
3	1	400299	290 DS SQ BOTTOM GLASS PANEL	TEMPERED GLASS
4	1	480040	290 DS LIGHT BAFFLE, QUADRAFROST	ABS
5	1	492900	290 DS ROUND BELT	STEEL
6	1	492914	290 DS SQ FRAME BRACKET ASSY	STEEL
7	1	600203	GLUE HOT MELT (NOT SHOWN)	HOT GLUE
8	1	600540	PVC FOAM 3 X 4 X 400MM	PVC FOAM
9	4	700061	RIVET 5/32" X .063"- .125" GRIP (NOT SHOWN)	STEEL
10	4	700781	M5 SHOULDER BOLT	STEEL

### 'AROURA GLO' DIFFUSER ASSEMBLY



LED AROURA GLO DIFFUSER ASSEMBLY COMPONENTS				
ITEM NO.	QTY.	PART NO.	DESCRIPTION	MATERIAL
1	1	400281	290DS GLASS ROUND SHALLOW	TEMPERED GLASS
2	1	400282	290DS GLASS BOWL METAL FRAME	TEMPERED GLASS
3	1	492900	290DS ROUND BELT	STEEL
4	1	700295	SEALANT DOW CORNING LDC 737	SEALANT
5	4	700985	BOLT M5 KNURL WHITE HEAD	STEEL

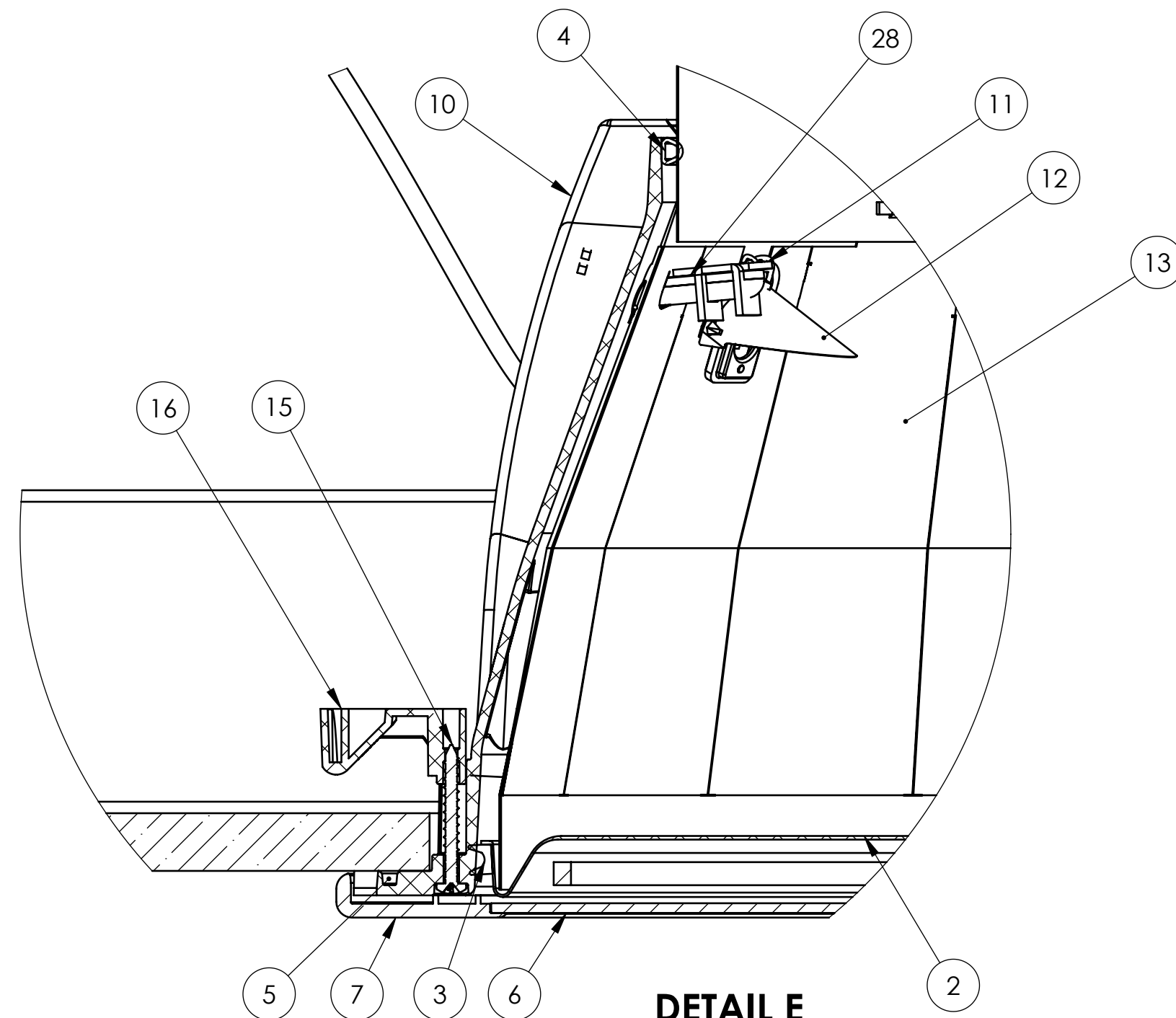
# SOLATUBE SMART LED WITH DETAILS



**SECTION D-D**

NOTE:

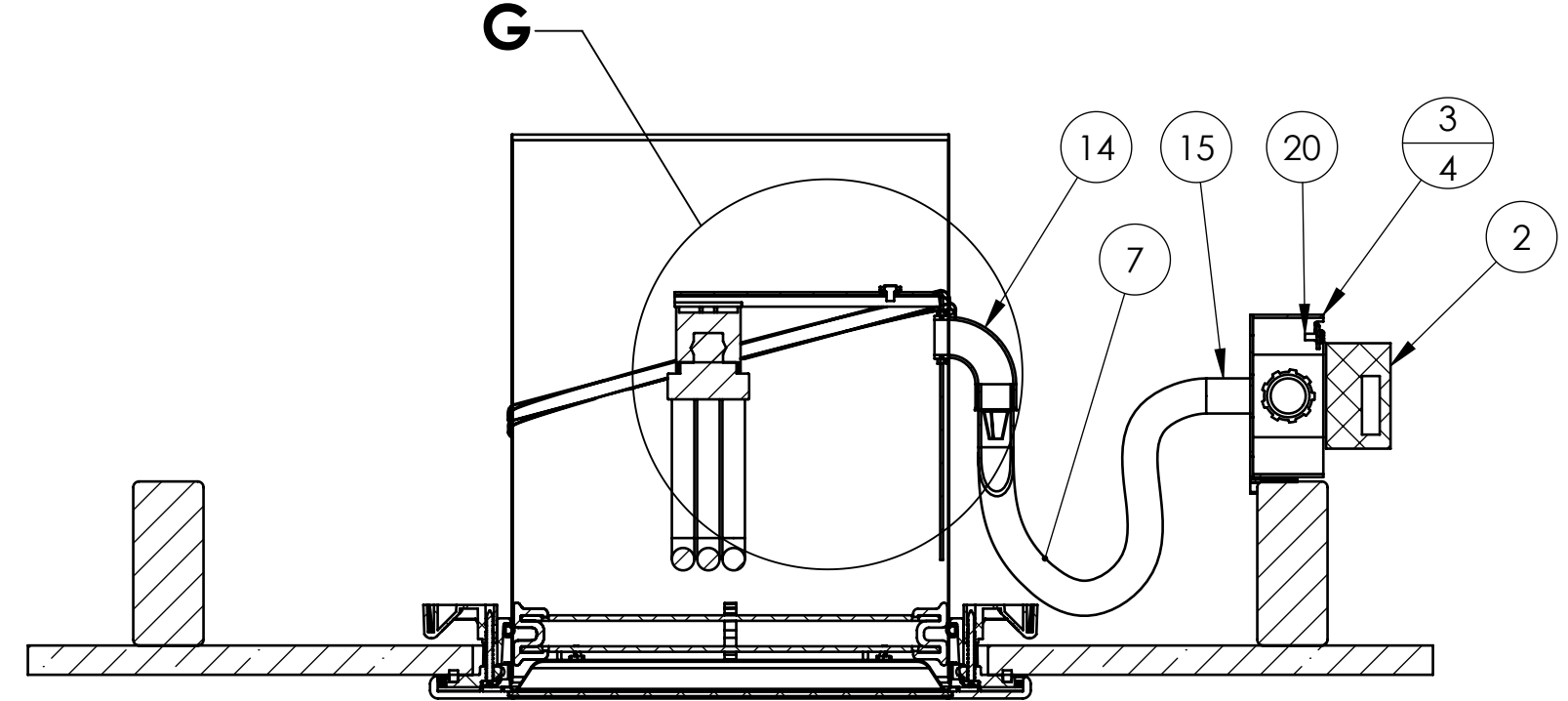
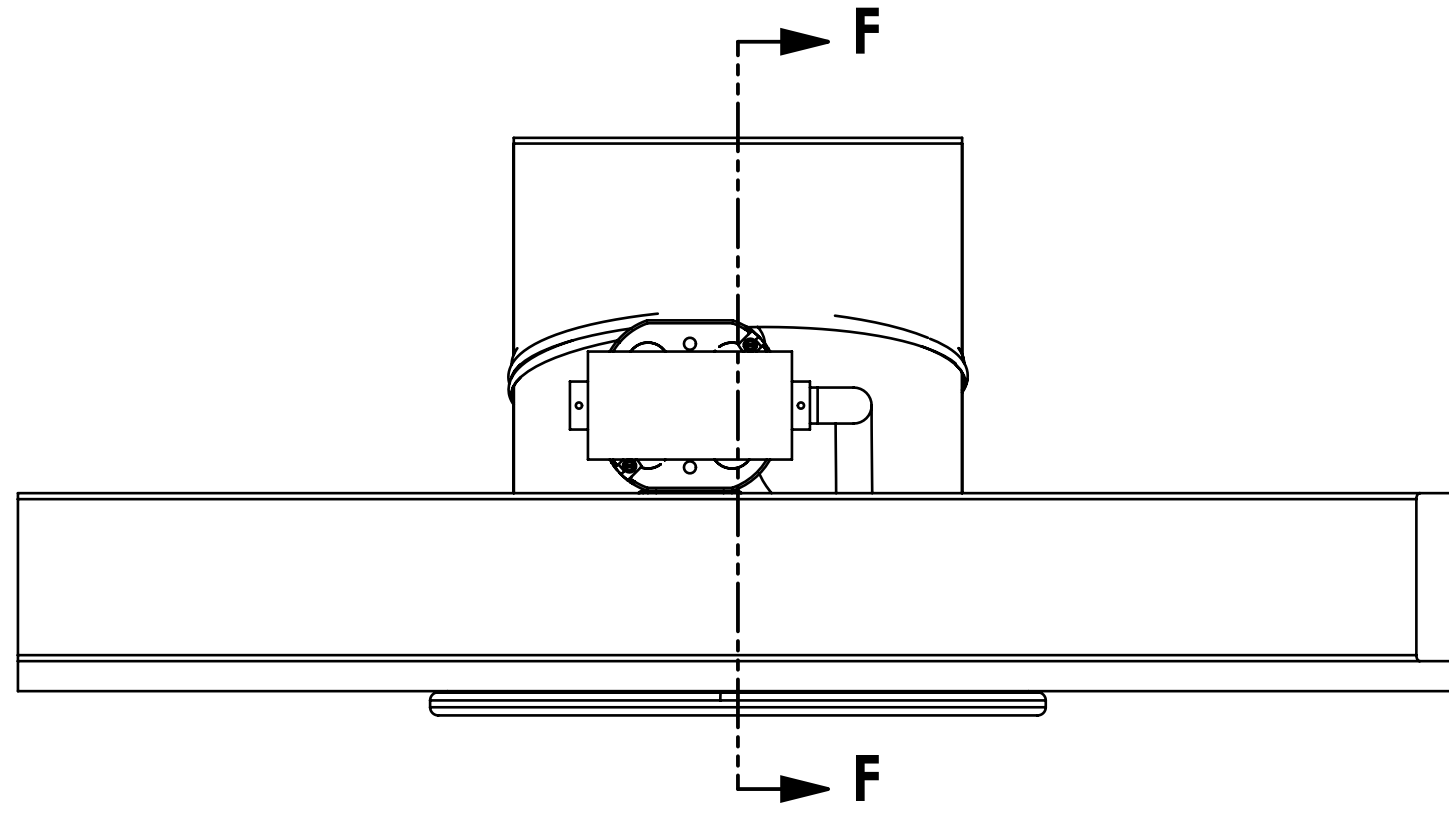
1. LED LIGHT KIT SHOWN ASSEMBLED TO 160 DS BOTTOM TUBE.
2. FOR UPPER ASSEMBLY INSTALLATION VIEWS SEE FIGURE 1.
3. EVALUATION OF THESE LIGHT FIXTURES FOR COMPLIANCE TO THE APPLICABLE ELECTRICAL CODES IS NOT PART OF THIS REPORT.



**DETAIL E  
SCALE 1 : 1.5**

ITEM NO.	PART NUMBER	DESCRIPTION	QTY.
1	300606	160DS BOTTOM TUBE	1
2	421345	NATURAL/SOFTENING EFFECT LENS 290 DS	1
3	600290	DIFFUSER SEAL 290 DS	1
4	600445	D SEAL HOLLOW	1
5	600620	FOAM SEAL RECTANGULAR 3/16" X 1/4"	1
6	410530	DIFFUSER PANEL 290 DS	1
7	410310	DRESS RING 290 DS	1
8	400300	AMPLIFIER HOUSING	1
9	400310	COVER COLLIMATOR STANDARD	1
10	400320	COVER COLLIMATOR PCBA	1
11	400345	HOLDER AWNING	4
12	400355	AWNING	4
13	300755	FACET COLLIMATOR ASSEMBLY	1
14	700085	SCREW #4-40 X 1/2" OVAL-PHIL HEAD (NOT SHOWN)	4
15	700450	SCREW #8 X 1-3/4" SMS PHIL PAN A/B THREAD	6
16	410220	CLAMP	6
17	700485	SCREW 1-5/8" PHIL BUGLE (NOT SHOWN)	4
18	500011	CONTROLLER LED PCBA (NOT SHOWN)	1
19	500012	WIRE HARNESS LED ARRAY (NOT SHOWN)	1
20	500545	STRAIN RELIEF DRIVER (NOT SHOWN)	1
21	500565	STANCHION DC COVER (NOT SHOWN)	1
22	500650	SCREW #8-32 X 1/4" (GROUND) (NOT SHOWN)	1
23	500660	WASHER #8 GROUND CUP (NOT SHOWN)	1
24	504035	STANCHION DRIVER (NOT SHOWN)	1
25	504115	WIRE HARNESS DRIVER (NOT SHOWN)	1
26	504335	WIRE NUT #18-#12 (NOT SHOWN)	3
27	700195	RIVET TUBULAR 1/8 x 5/32 TRUSS ZINC (NOT SHOWN)	6
28	500025	LIGHT SENSOR ASSEMBLY	1
29	600203	GLUE HOT MELT (NOT SHOWN)	0.001
30	601107	THERMAL CHIMNEY 1/2 (NOT SHOWN)	2
31	700175	ROMEX CLAMP CONNECTOR 3/8" (NOT SHOWN)	1
OPTIONAL COMPONENTS			
ITEM NO.		DESCRIPTION	QTY.
32		OCCUPANCY SENSOR	1

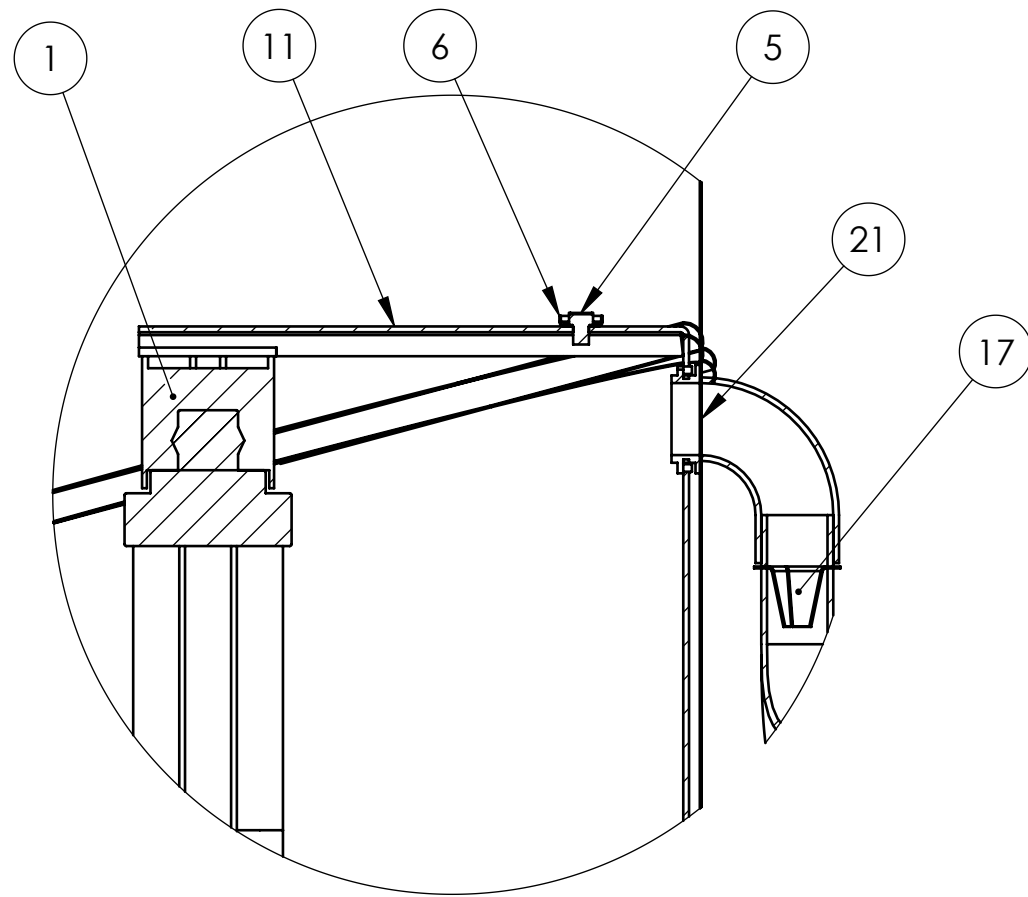
# TYPICAL SOLATUBE LIGHT KIT ASSEMBLY



**SECTION F-F**

NOTE:

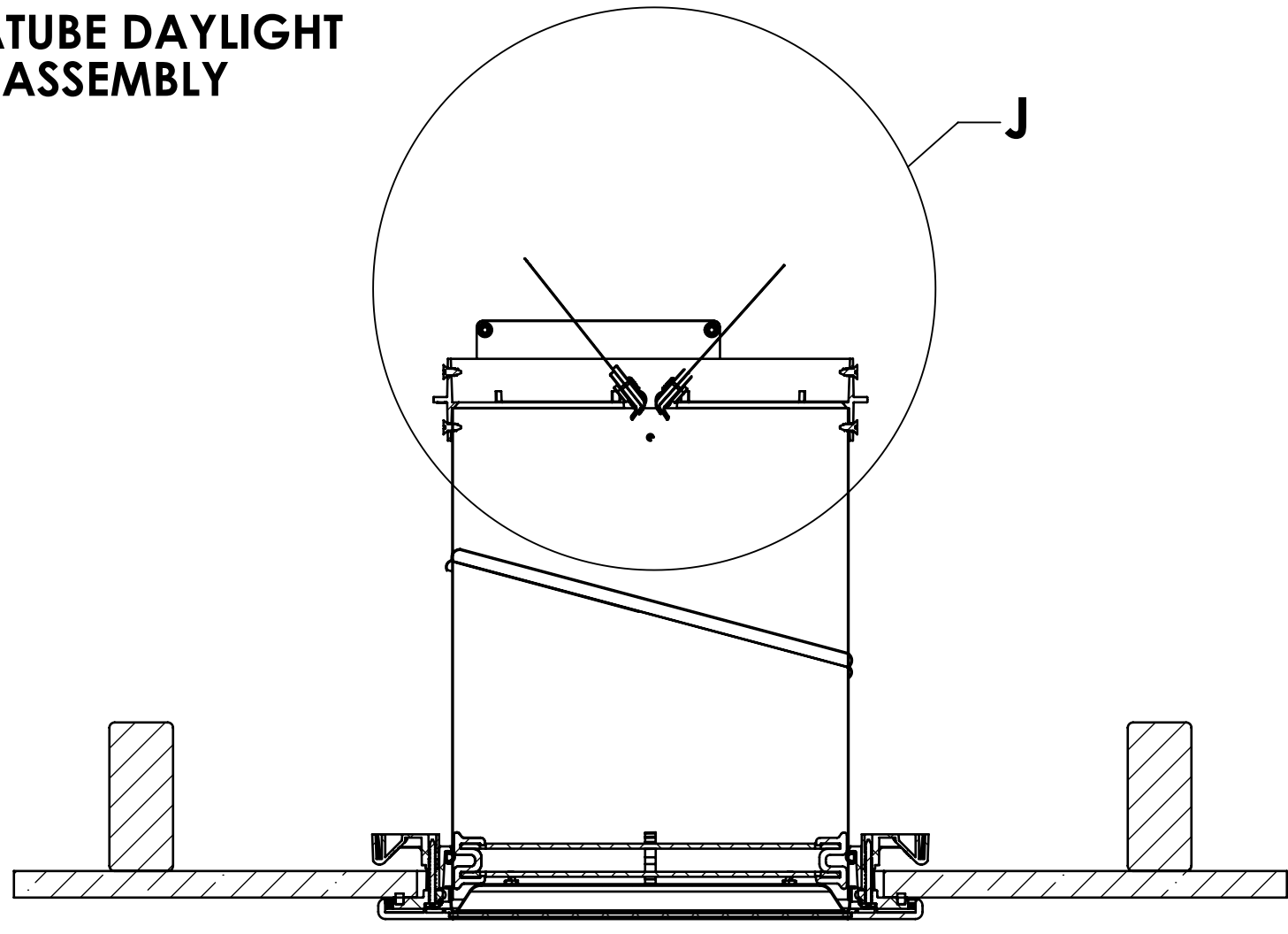
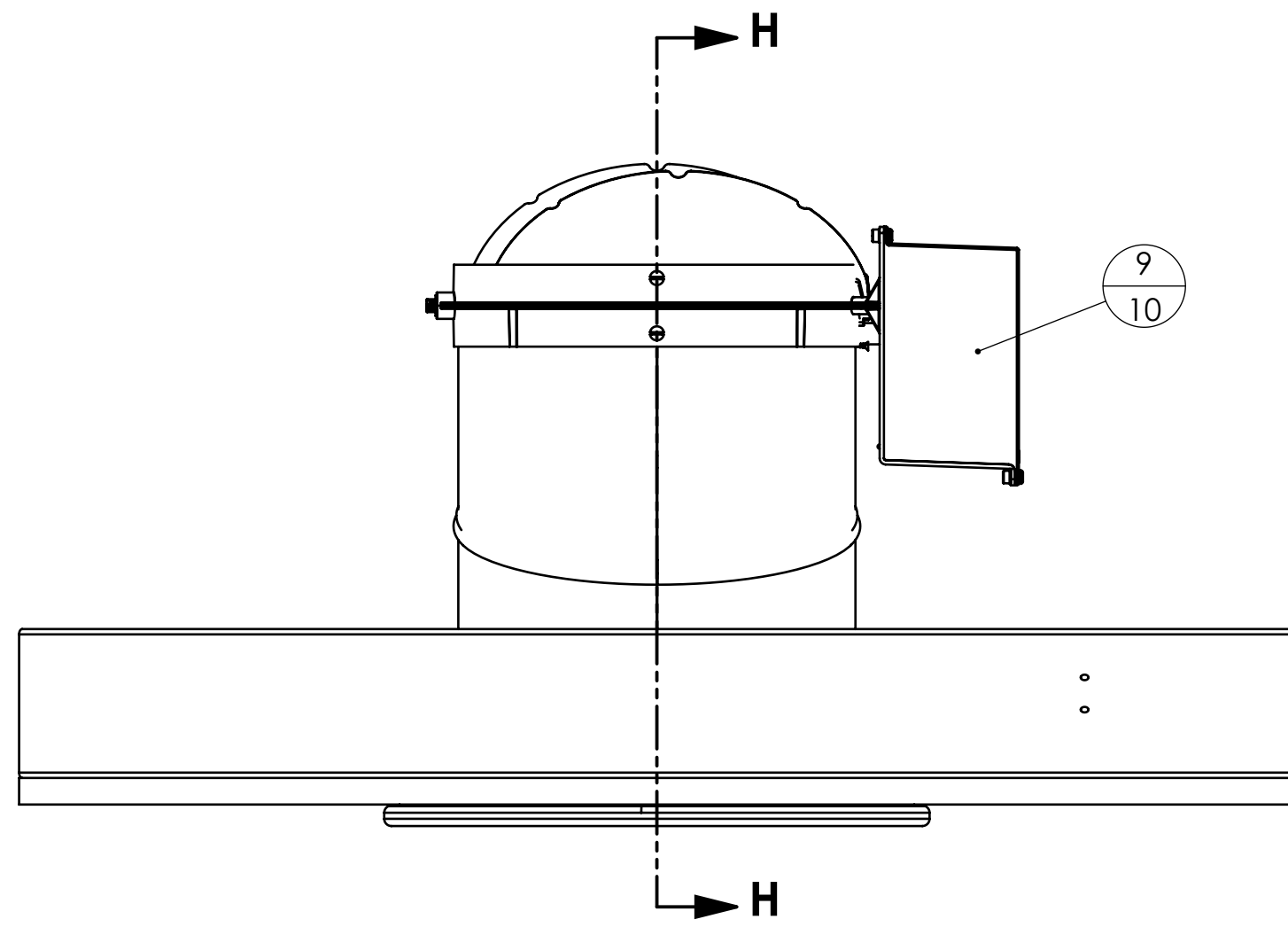
1. UNIVERSAL LIGHT KIT SHOWN ASSEMBLED TO 160 DS BOTTOM TUBE.
2. FOR UPPER ASSEMBLY INSTALLATION VIEWS SEE FIGURE 1.
3. EVALUATION OF THESE LIGHT FIXTURES FOR COMPLIANCE TO THE APPLICABLE ELECTRICAL CODES IS NOT PART OF THIS REPORT.



**DETAIL G  
SCALE 1 : 2**

ITEM NO.	PART NUMBER	DESCRIPTION	QTY.
1	500110	LAMP HOLDER 4-PIN	1
2	500120	BALLAST, ELECTRIC 26W	1
3	500550	JUNCTION BOX 4" W/BRACKET	1
4	500560	JUNCTION BOX 4" COVER	1
5	500650	SCREW #8-32 X 1/4"	1
6	500660	WASHER #8 GROUND CUP	1
7	500910	CONDUIT FLEXIBLE 3/8" X 48"	1
8	501040	WIRE LEAD BLACK 18 AWG 62' (NOT SHOWN)	1
9	501050	WIRE LEAD WHITE 18 AWG 62' (NOT SHOWN)	1
10	501060	WIRE LEAD GREEN 18 AWG 62' (NOT SHOWN)	1
11	501440	BRACKET CFL 26 WATT	1
12	501470	ZIP TIE, HELICAL WRAP (NOT SHOWN)	1
13	501500	WASHER FENDER 1/4" X 1-1/4" (NOT SHOWN)	1
14	500230	CONNECTOR 90 DEG 3/8	1
15	500240	CONNECTOR STRAIGHT 3/8	1
16	500530	SCREW HEX #8 X .75" (NOT SHOWN)	4
17	500540	BUSHING ANTI-SHORT RED	1
18	500630	NUT WIRE 73B (NOT SHOWN)	6
19	500640	SLEEVE CRIMP 10-18 GA (NOT SHOWN)	1
20	501070	SCREW GROUND 10-32 X .375	1
21	501080	CONDUIT FOAM SEAL 1/8" H X 3/4"W	4

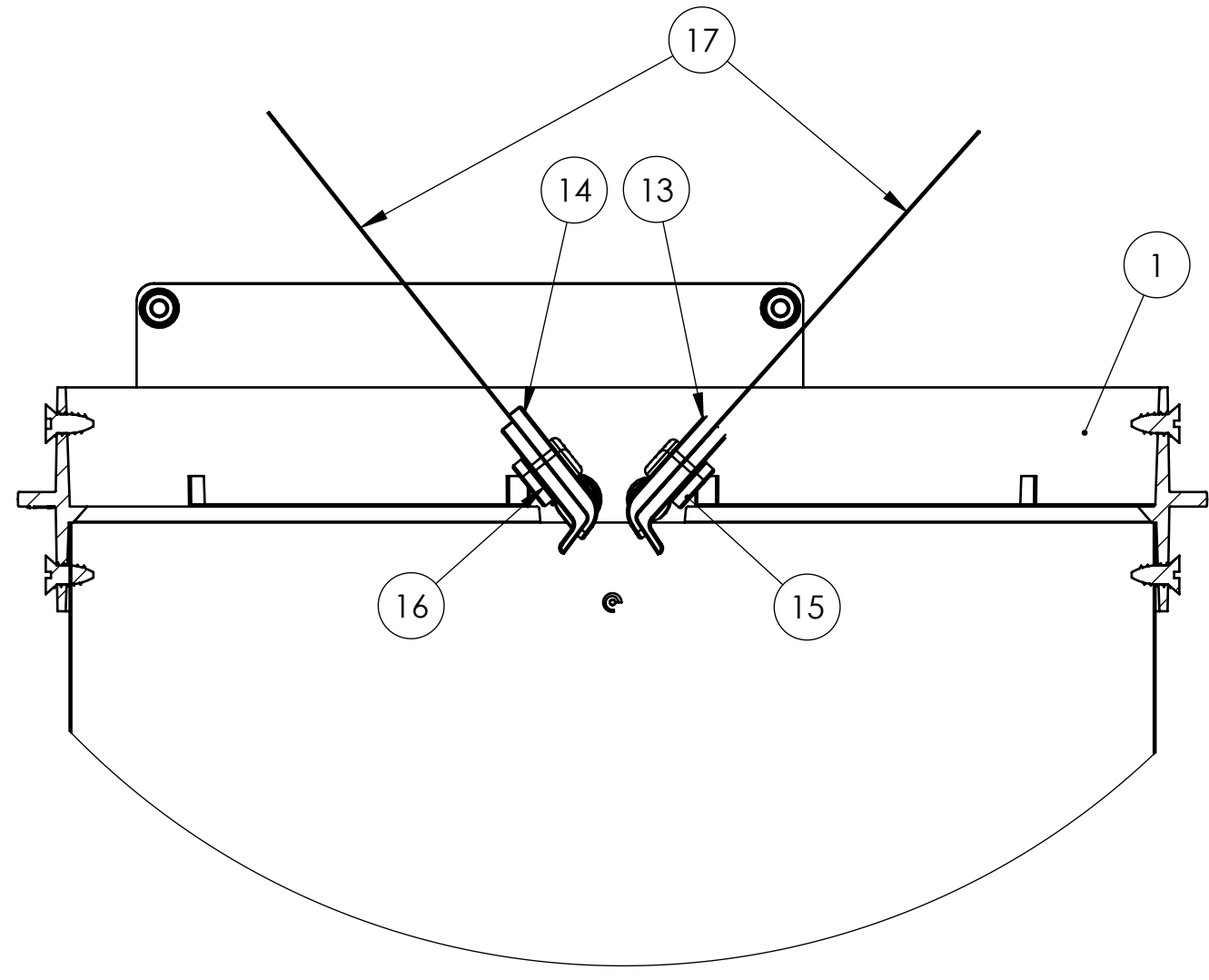
# TYPICAL SOLATUBE DAYLIGHT DIMMER ASSEMBLY



**SECTION H-H**

NOTE:

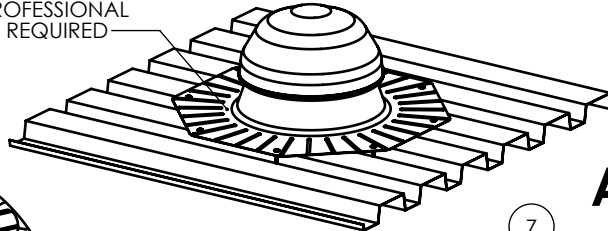
1. DAYLIGHT DIMMER KIT SHOWN ASSEMBLED TO 160 DS BOTTOM TUBE.
2. FOR UPPER ASSEMBLY INSTALLATION VIEWS SEE FIGURE 1.
3. EVALUATION OF THESE LIGHT FIXTURES FOR COMPLIANCE TO THE APPLICABLE ELECTRICAL CODES IS NOT PART OF THIS REPORT.



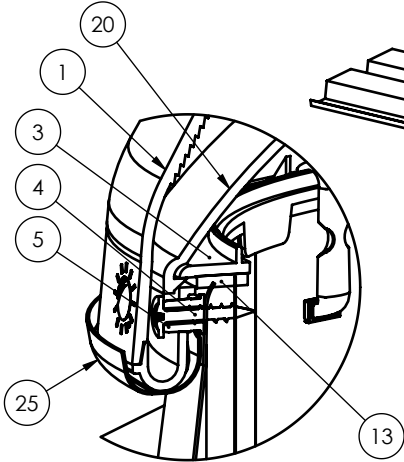
**DETAIL J  
SCALE 1 : 1.5**

ITEM NO.	PART NUMBER	DESCRIPTION	QTY.
1	420775	RING DAYLIGHT DIMMER	1
2	570005	POWER SUPPLY (NOT SHOWN)	1
3	570008	RETAINER, E-RING, 5/16 (NOT SHOWN)	4
4	570009	PCB, MOTOR CONTROL (NOT SHOWN)	1
5	570010	MOTOR GEARED (NOT SHOWN)	1
6	570015	CAM, DRIVE MECHANISM (NOT SHOWN)	1
7	570016	DOG, DRIVE MECHANISM (NOT SHOWN)	1
8	570018	LID, DRIVE MECHANISM (NOT SHOWN)	1
9	570020	MOUNT, JUNCTION BOX	1
10	570021	COVER, JUNCTION BOX	1
11	570022	SPACER, NYLON 1/2"	1
12	570024	CABLE CLAMP, DLD (NOT SHOWN)	1
13	570025	CLIP, RIGHT	2
14	570026	CLIP, LEFT	2
15	570027	CLIP, BACK RIGHT	2
16	570028	CLIP, BACK LEFT	2
17	570030	DISK, DIMMER	2
18	721050	SCREW TRILOB #4 X 3/16 (NOT SHOWN)	4
19	721055	SCREW TRILOB #6 X 3/8 (NOT SHOWN)	8
20	721060	SCREW TRILOB #8 X 3/8 (NOT SHOWN)	8
21	721065	SCREW TRILOB #8 X 1.0" (NOT SHOWN)	4
22	721070	SCREW TRILOB #12 X 1/2 (NOT SHOWN)	2

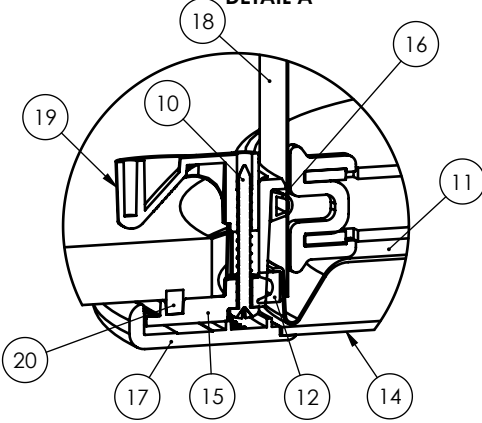
NOTE:  
FLASHING PROVIDED BY  
SOLATUBE, WEATHERPROOFING  
DETERMINED BY SOLATUBE  
GENERAL CONTRACTOR  
AND/OR PROFESSIONAL  
ROOFER AS REQUIRED



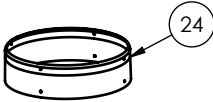
METAL ROOF  
TYPE II OR III CONSTRUCTION  
WITH STANDARD DIFFUSER ASSEMBLY



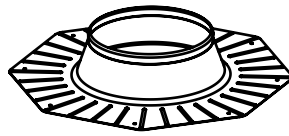
DOME ASSEMBLY  
DETAIL A



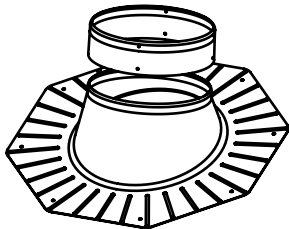
CEILING RING ASSEMBLY  
DETAIL B



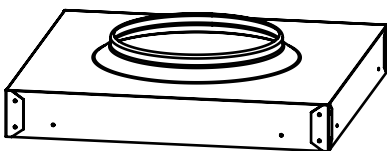
TURRET EXTENSION FOR FLASHING



NO-PITCH FLASHING



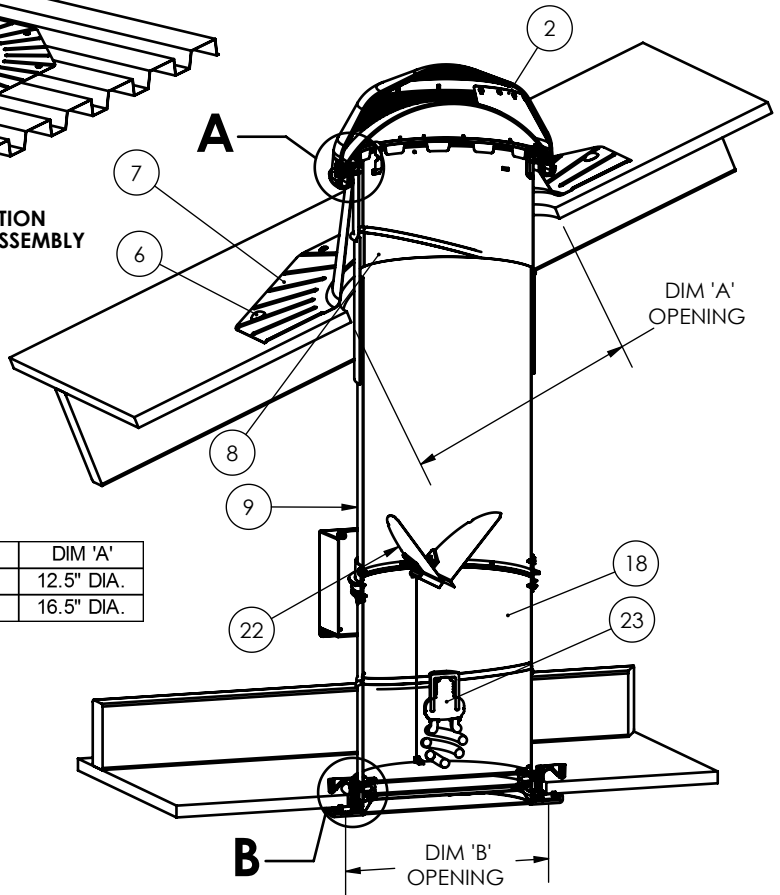
PITCHED FLASHING



CURB FLASHING



UNIVERSAL TILE FLASHING



WOOD ROOF  
TYPE IV OR V CONSTRUCTION

	DIM 'A'
160 DS SOLATUBE	12.5" DIA.
290 DS SOLATUBE	16.5" DIA.

ITEM NO.	QTY.	DESCRIPTION
1	1	OUTER DOME
2	1	LIGHT TRACKER
3	1	DOME RING
4	4	SCREW #8 X 1"
5	4	DOME RING SPACER
6*	8	SCREW #10 X 2" SMS
7	1	FLASHING
8	1	TOP TUBE
9	1	TUBE 16" EXTENSION
10	4	SCREW #8 X 1.5" SMS
11	1	EFFECT LENS
12	1	EFFECT LENS SEAL
13	1	DOME RING SEAL
14	1	DIFFUSER PANEL
15	1	CEILING RING
16	1	CEILING RING 'D' SEAL
17	1	DRESS RING
18	1	BOTTOM TUBE
19	4	CLAMP
20	1	CEILING RING RECTANGULAR SEAL

OPTIONAL COMPONENTS		
ITEM NO.	QTY.	DESCRIPTION
21	1	INNER DOME
22	1	DAYLIGHT DIMMER
23	1	LIGHT FIXTURE
24	1	TURRET EXTENSION
25	1	DOME EDGE PROTECTION BAND

\* USE (8) #10 TEK SCREWS FOR METAL ROOF

FIGURE 1 - 160 DS & 290 DS SOLATUBE WITH DETAILS